

Driving safely in road tunnels

**WHAT TO DO IN CASE OF
A TRAFFIC JAM, BREAKDOWN,
ACCIDENT OR FIRE?**

More information on www.tunnel.lu

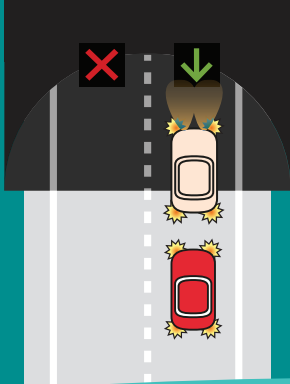


LE GOUVERNEMENT
DU GRAND-DUCHÉ DE LUXEMBOURG
Ministère de la Mobilité
et des Travaux publics



SÉCURITÉ
ROUTIÈRE
LUXEMBOURG

IN CASE OF A TRAFFIC JAM



Leave the lane marked with a red cross



Move towards the lane marked with a green arrow



Switch on the hazard warning lights



Turn on the radio and listen to the messages on the loudspeakers



Comply with speed limits



Maintain safety distances



Do not turn around or reverse

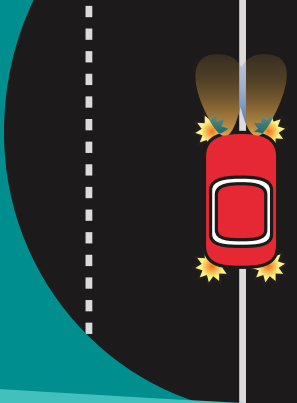


Leave an emergency lane



Switch off the engine when stopped

IN CASE OF AN ACCIDENT OR A BREAKDOWN



Switch on the hazard warning lights



Park the vehicle as close to the right as possible



Locate the emergency exit and emergency telephones



Switch off the engine



Put on the safety waistcoat before leaving the vehicle



Go to a SOS terminal and call 112 with an emergency telephone

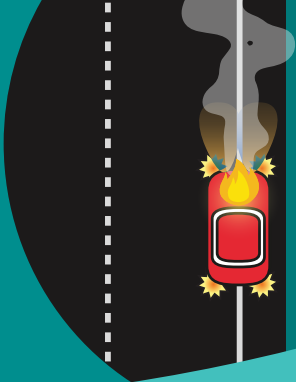


If possible, give first aid to the injured



Get to safety on the pavement in front of the vehicle

IN CASE OF A FIRE



Switch on the hazard warning lights



Try to drive the vehicle out of the tunnel



If this is not possible, park the vehicle
as close to the right as possible



Switch off the engine and leave the keys
in the car



Put on the safety waistcoat before
leaving the vehicle



Go to a SOS terminal and call 112 with
an emergency telephone



If possible, extinguish the fire with
an extinguisher or fire-extinguishing
installation available in the emergency
niche



If possible, give first aid to the injured



Leave the tunnel as quickly as possible
through an emergency exit

VENTILATION SYSTEMS



Ventilation systems provide fresh air and good visibility. In case of a fire, the ventilation system draws the smoke out of the tunnel or pushes it in one direction only. In the latter case, you must face the air flow and head for the nearest emergency exit.

EMERGENCY EXITS

The cross galleries serve as emergency exits. They are indicated by clearly visible signs and specific green markings to enable users to evacuate the tunnel quickly. There is a gallery every 300 m (in tunnels longer than 500 m).



SOS NICHES

SOS niches are located at regular intervals (130 m) in the tunnel.

They are equipped with

- a telephone
- a fixed camera
- portable fire extinguishers
- a mobile fire-fighting system.



In case of a fire, do not remain in an SOS niche to wait for the emergency services, but leave the tunnel via an emergency exit.



TUNNEL LIGHTING

Lighting systems allow the human eye to adapt quickly to the reduced visibility in tunnels, and SOS niches and emergency exits are equipped with permanent emergency lighting.

OTHER SAFETY SYSTEMS IN THE TUNNEL

- Loudspeakers broadcasting safety messages
- Automatic smoke and fire detection
- Carbon monoxide detection
- Video surveillance
- Opacity measurement



More information on www.tunnel.lu



LE GOUVERNEMENT
DU GRAND-DUCHÉ DE LUXEMBOURG
Ministère de la Mobilité
et des Travaux publics



SÉCURITÉ
ROUTIÈRE
LUXEMBOURG